



THE KIMBERLEY INCLUSIONS

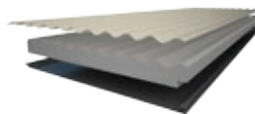
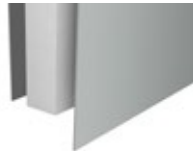
• PANELSPAN® Insulated Wall Panel

PANELSPAN® insulated panel system for external and internal walls. PANELSPAN® Insulated Panel System is manufactured using grooved fibre cement external sheeting and recessed edge fibre cement internal sheeting

• INSULSPAN® Insulated Roof Panel

INSULSPAN® panel is manufactured using external corrugated COLORBOND® or ZINCALUME® profile sheets in a choice of 21 standard colours and an internal flat COLORBOND® skin in white only

- Aluminium windows and sliding doors are available in a large range of coloured frames. They are designed and glazed in accordance with relevant Australian Standards.
- Pre-hung internal timber doors and jambs
- COLORBOND® trims, cappings, flashing and rainwater products
- Blue Core Steel framing system
- Fixing and fasteners to assemble your Quick Built Home
- Council on placement of an order you will receive information package for council application and construction preparation.
 - Structural plans and specifications
 - Structural engineering certification
 - Detailed construction manual



PRICING

Kit Price	\$37,180
Optional QS modular steel flooring system Including SHS Piers and excluding flooring and decking	\$9,095

SPECIFICATIONS

	Width	Depth
Overall	8.3m	7.2m
Living	8.3m	3.6m
Bedroom	3.6m	3.5m
Bathroom	1.2m	2.7m
Patio	3.6m	1.8m

WINDOW / DOOR SCHEDULE

Window Quantity	Horizontal Dimension	Vertical Dimension	Window Type
1	1200	1000	Aluminium Frame Sliding
3	1200	1200	Aluminium Frame Sliding
1	800	300	Aluminium Frame Sliding
Door Qty			
1	1800	2100	Aluminium Sliding 2 panel

THE KIMBERLEY EXCLUSIONS

- **DELIVERY** Due to all the different site locations and site terrains, delivery is POA
- **COUNCIL FEES** are not included
- **FOUNDATIONS** Footing engineering is available for certain sites, please ask for details
- **CONSTRUCTION** Installation is not included
- **SERVICE & FITTINGS** Plumbing and electrical services, connections and fittings are not included
- **FLOORING AND COVERINGS** Flooring, floor covering, decking and stairs are not included
- **KITCHENS & BATHROOMS** are not included giving you the opportunity to design your own within your own taste and budget